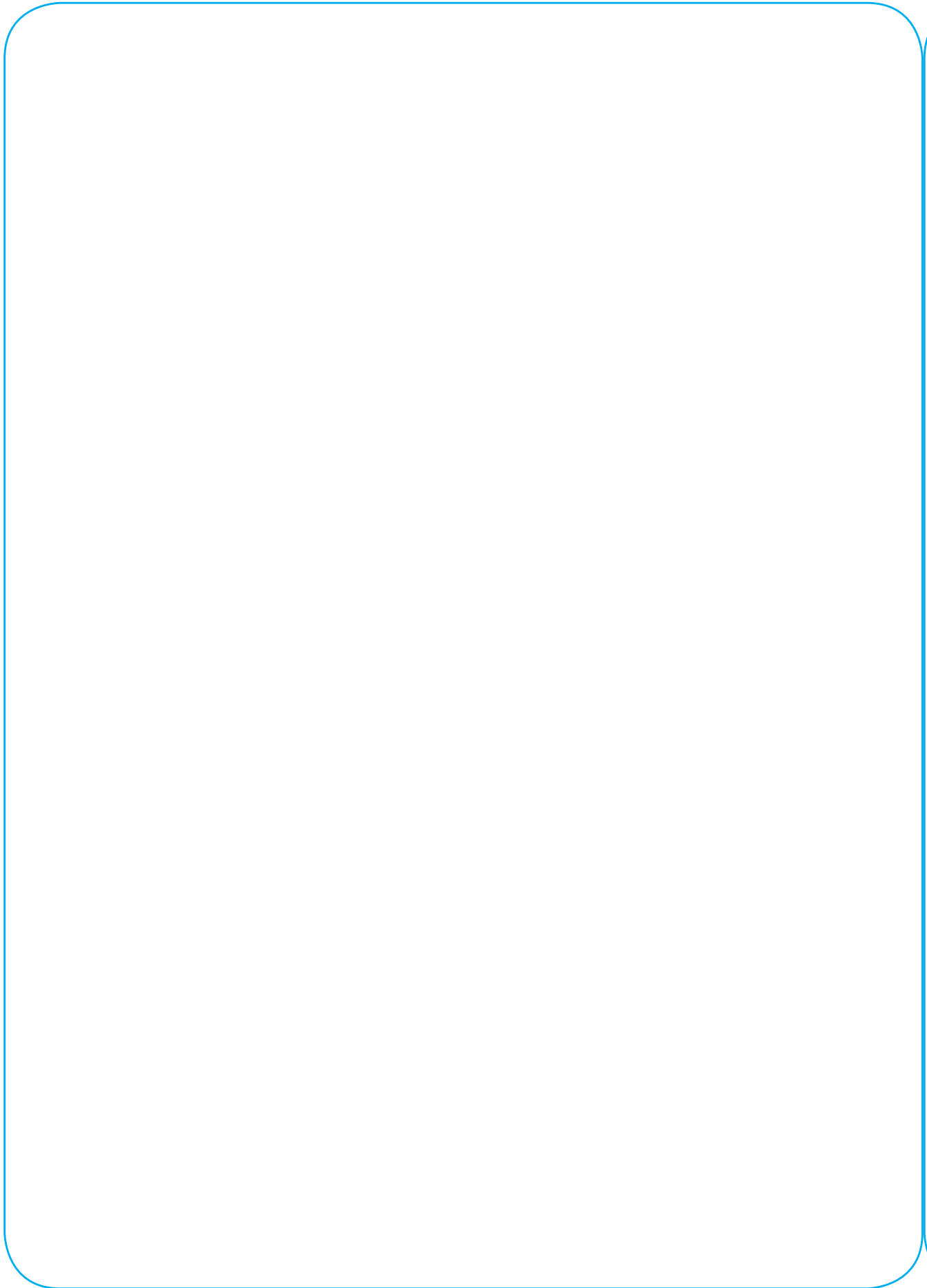
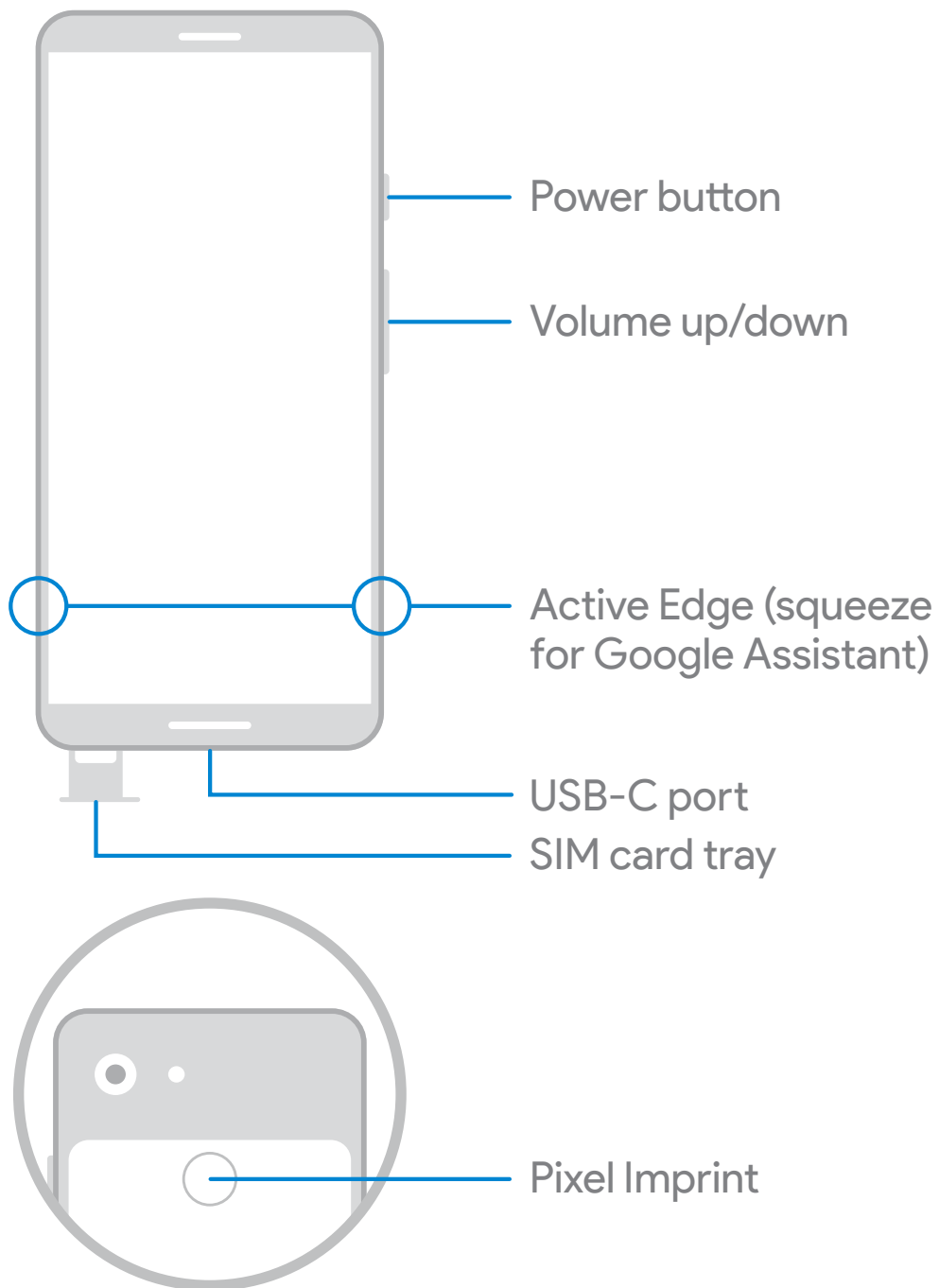


**Let's
get
started.**

Google



Meet your new Pixel



Before you start

Switching from an iPhone®

To bring all your texts and data (like contacts, music, files, and apps) with you to your new Pixel, turn off

- iMessage®, FaceTime®, and Device Management (if needed) in your iPhone Settings
- iTunes® encryption in the iTunes app on your computer

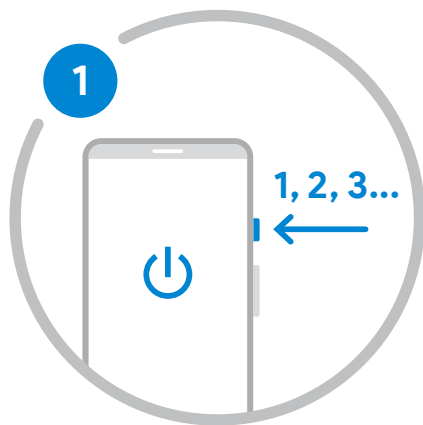
For iPhone help, go to g.co/imessagehelp and g.co/datatransferhelp

Switching from Android or another phone

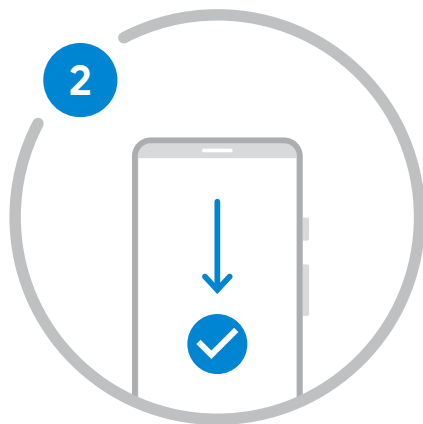
Go straight to setup. Or, follow the full transfer guide for your old phone at g.co/datatransferhelp

Set up your new Pixel

Your SIM card came preinstalled. No need to use the SIM tool.



Press and hold the power button for 5 seconds.

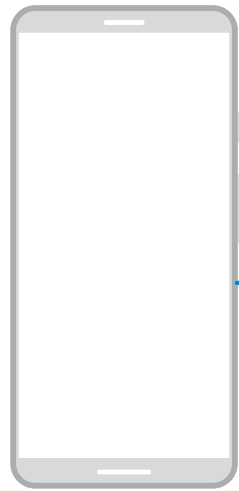


Follow the on-screen instructions.

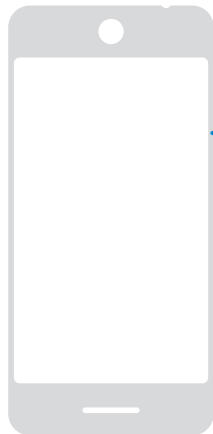
Copy apps & data to Pixel

1. Follow the on-screen steps to continue setting up your Pixel.
2. At the **Copy apps & data** screen, connect the phones with the Quick Switch Adapter (if needed) and your old phone's cable.
3. Choose what to copy to Pixel.

For support, go to g.co/pixel/help



Pixel



Quick Switch Adapter
(included in box)

Old phone's cable

Old phone

We're here for you

Find tips, learn about new features, and talk to a real human to get help when you need it:

On your phone, go to Settings > Tips & Support

On the web, visit g.co/pixel/help